

# 2004 Sacramento River Aerial Atlas

**DRAFT**  
September 2005

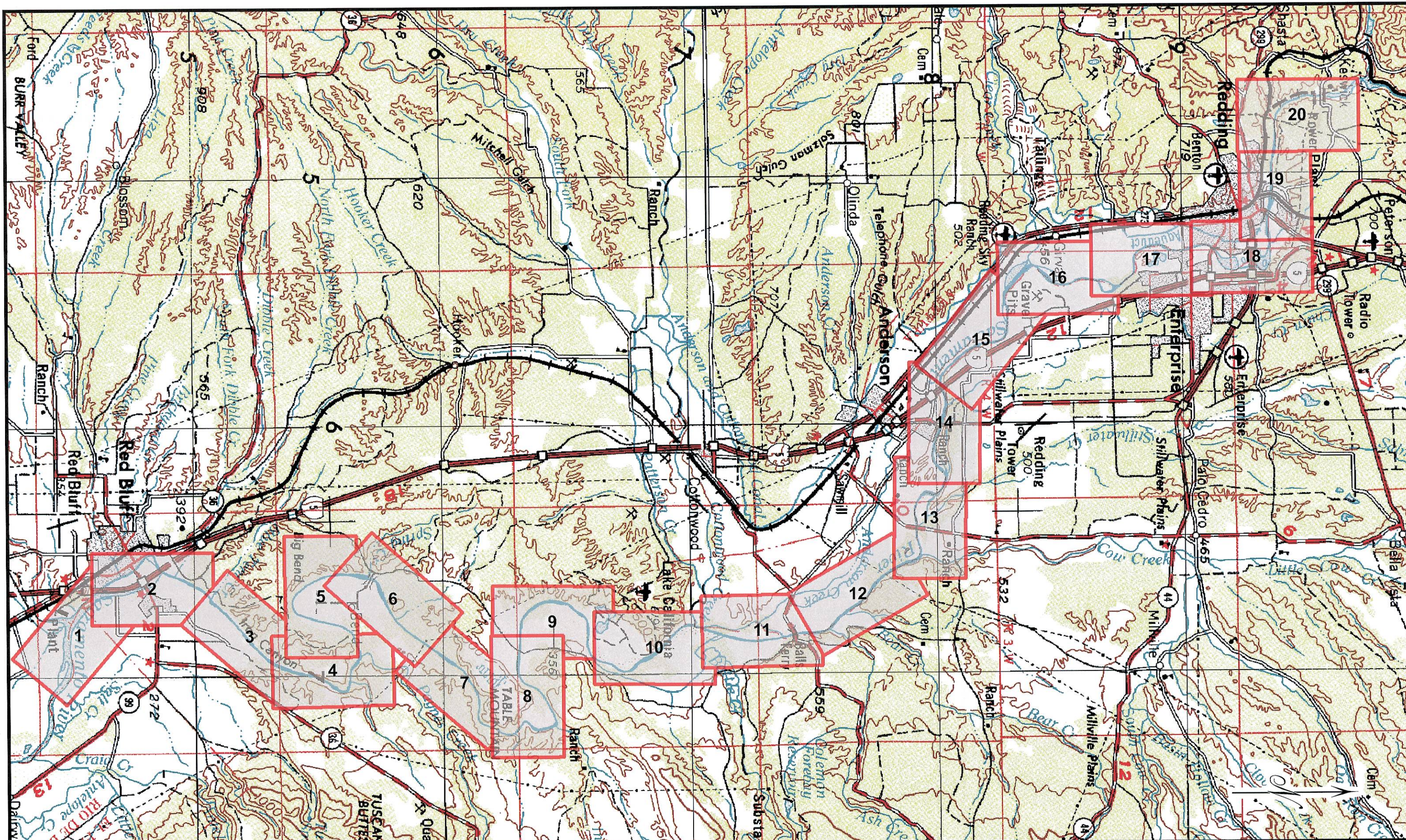
STATE OF CALIFORNIA  
THE RESOURCES AGENCY  
DEPARTMENT OF WATER RESOURCES  
NORTHERN DISTRICT

RED BLUFF, CA (River Mile 243)  
TO  
KESWICK DAM (River Mile 302)

Data source: 2004 AirPhoto USA Imagery  
<http://www.airphotousa.com>







# LOCATION MAP

## LEGEND

 PAGE NUMBER

STATE OF CALIFORNIA  
 THE RESOURCES AGENCY  
 DEPARTMENT OF WATER RESOURCES  
 NORTHERN DISTRICT

SACRAMENTO RIVER  
 RED BLUFF (River Mile 243)  
 TO  
 KESWICK DAM (River Mile 302)

2004 AERIAL PHOTO ATLAS

Data source: 2004 AirPhoto USA  
 ~2' resolution imagery

<http://www.airphotousa.com/>







0 500 1,000 2,000 Feet

\* 1 inch = 1,000 feet when printed in 11x17 format

\* Use the scale bar to calculate distances when printed in different formats

⊕ River miles

Digitized from 1991 Aerial Atlas

(Source: US Army Corps of Engineers, Sacramento District)

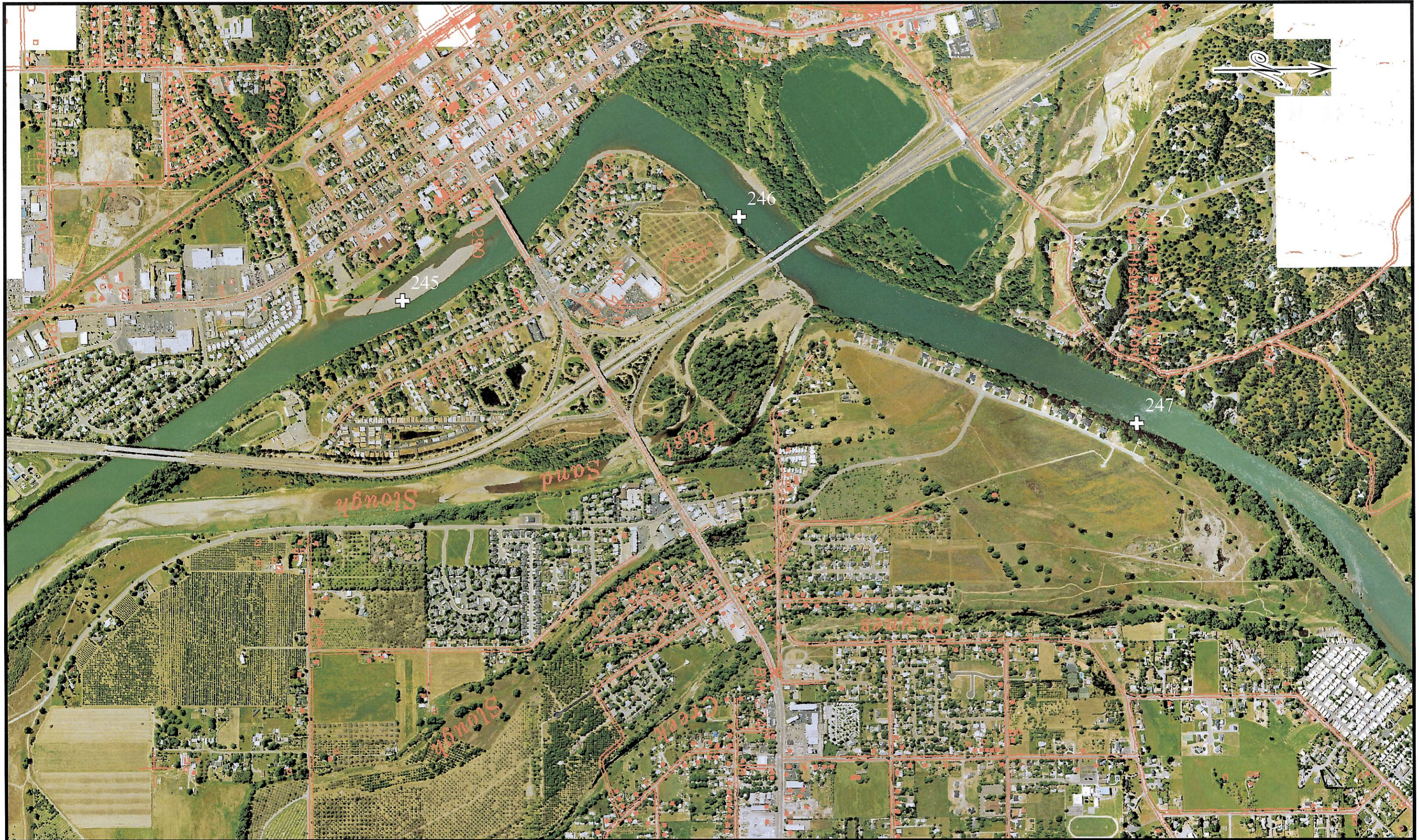
STATE OF CALIFORNIA  
 THE RESOURCES AGENCY  
 DEPARTMENT OF WATER RESOURCES  
 NORTHERN DISTRICT

SACRAMENTO RIVER  
 RED BLUFF (River Mile 243)  
 TO  
 KESWICK DAM (River Mile 302)

Data source: 2004 AirPhoto USA  
 ~2' resolution imagery

<http://www.airphotousa.com/>





0 500 1,000 2,000 Feet  
 \* 1 inch = 1,000 feet when printed in 11x17 format  
 \* Use the scale bar to calculate distances when printed in different formats

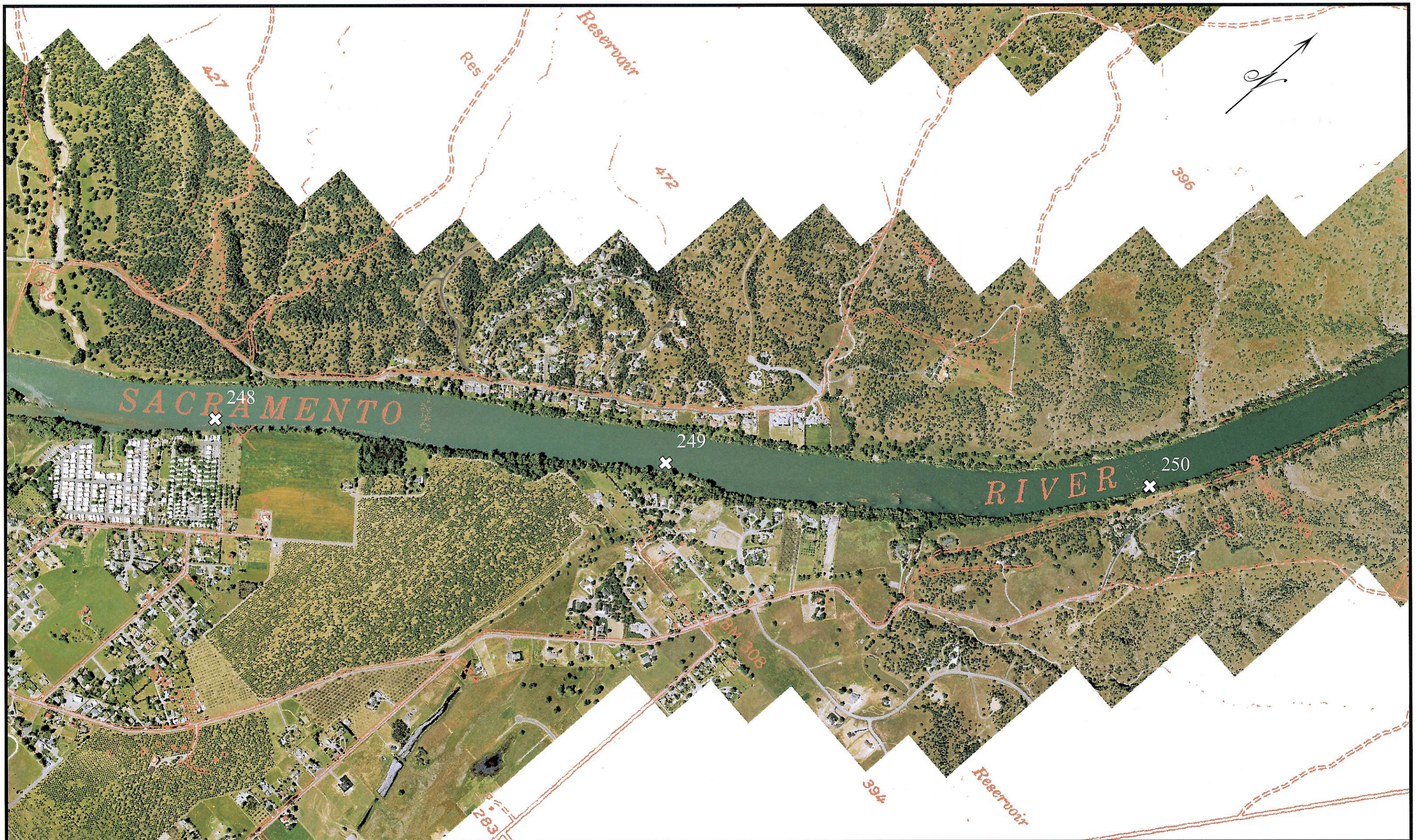
⊕ River miles  
 Digitized from 1991 Aerial Atlas  
 (Source: US Army Corps of Engineers, Sacramento District)

STATE OF CALIFORNIA  
 THE RESOURCES AGENCY  
 DEPARTMENT OF WATER RESOURCES  
 NORTHERN DISTRICT

SACRAMENTO RIVER  
 RED BLUFF (River Mile 243)  
 TO  
 KESWICK DAM (River Mile 302)


Data source: 2004 AirPhoto USA  
 ~2' resolution imagery  
<http://www.airphotousa.com/>





0 500 1,000 2,000 Feet

\* 1 inch = 1,000 feet when printed in 11x17 format  
 \* Use the scale bar to calculate distances when printed in different formats

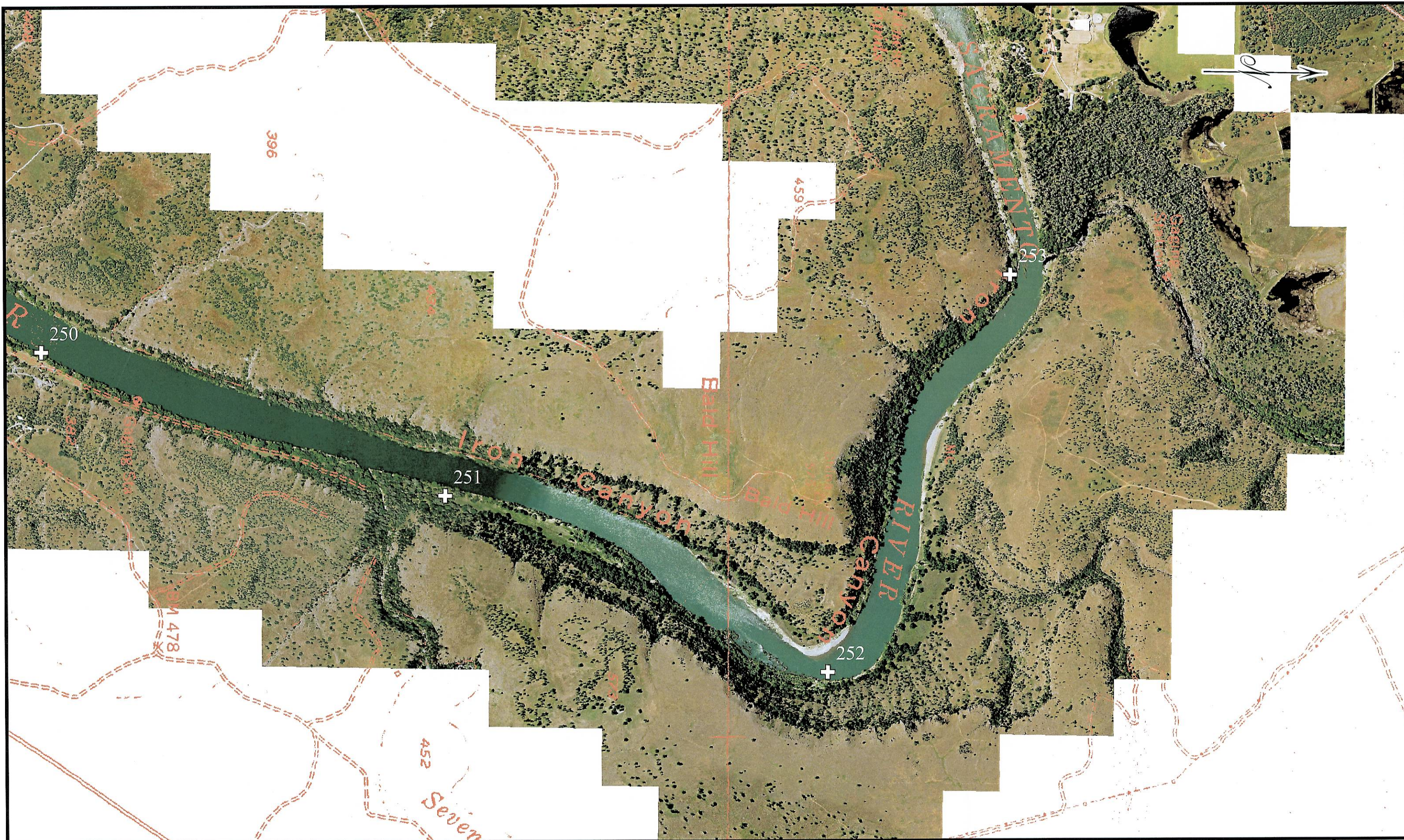
 River miles  
 Digitized from 1991 Aerial Atlas  
 (Source: US Army Corps of Engineers, Sacramento District)

STATE OF CALIFORNIA  
 THE RESOURCES AGENCY  
 DEPARTMENT OF WATER RESOURCES  
 NORTHERN DISTRICT

SACRAMENTO RIVER  
 RED BLUFF (River Mile 243)  
 TO  
 KESWICK DAM (River Mile 302)

Data source: 2004 AirPhoto USA  
 ~2' resolution imagery  
<http://www.airphotousa.com/>





0 500 1,000 2,000 Feet

\* 1 inch = 1,000 feet when printed in 11x17 format

\* Use the scale bar to calculate distances when printed in different formats

⊕ River miles

Digitized from 1991 Aerial Atlas

(Source: US Army Corps of Engineers, Sacramento District)

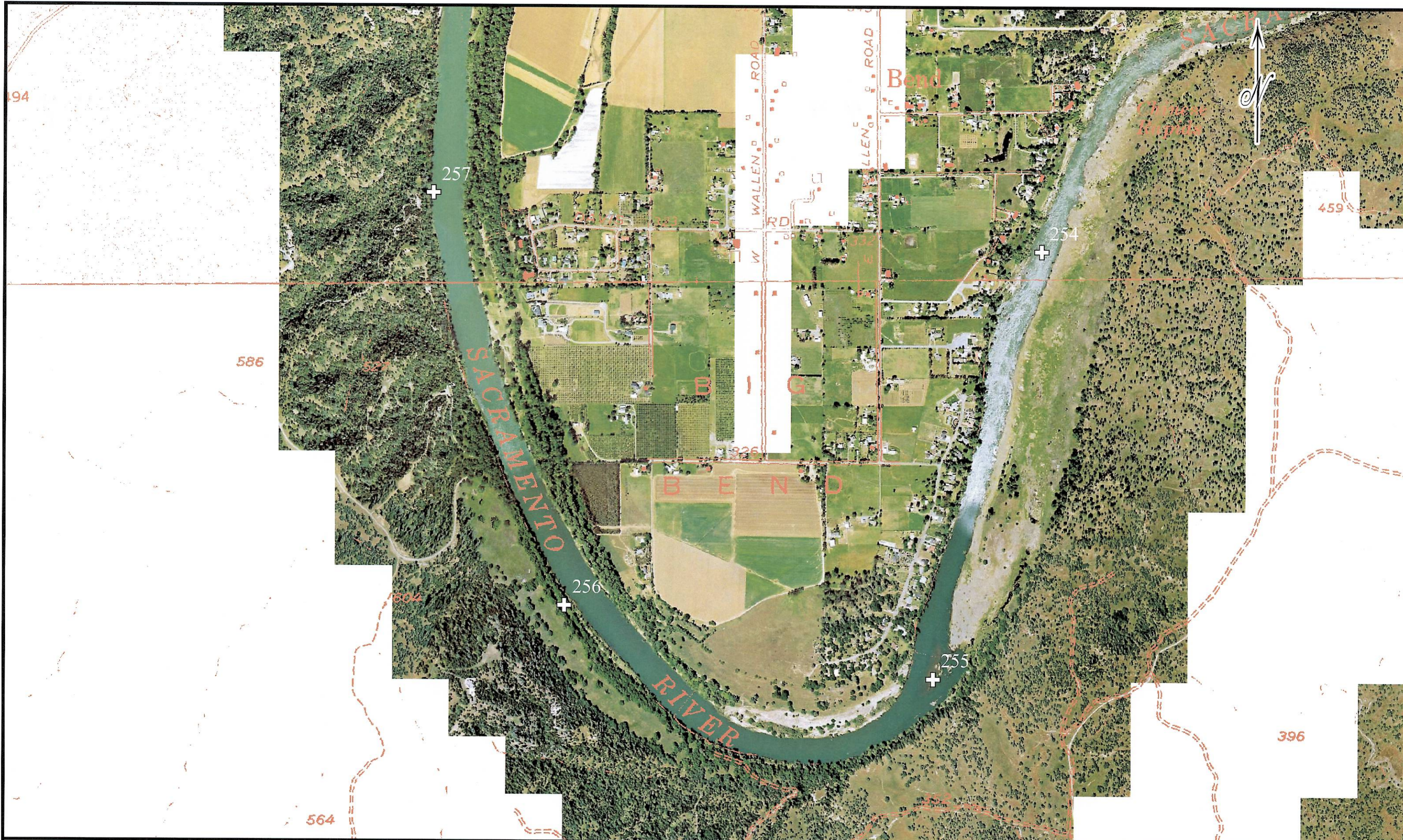
STATE OF CALIFORNIA  
 THE RESOURCES AGENCY  
 DEPARTMENT OF WATER RESOURCES  
 NORTHERN DISTRICT

SACRAMENTO RIVER  
 RED BLUFF (River Mile 243)  
 TO  
 KESWICK DAM (River Mile 302)

Data source: 2004 AirPhoto USA  
 ~2' resolution imagery

<http://www.airphotousa.com/>





0 500 1,000 2,000 Feet  
 \* 1 inch = 1,000 feet when printed in 11x17 format  
 \* Use the scale bar to calculate distances when printed in different formats

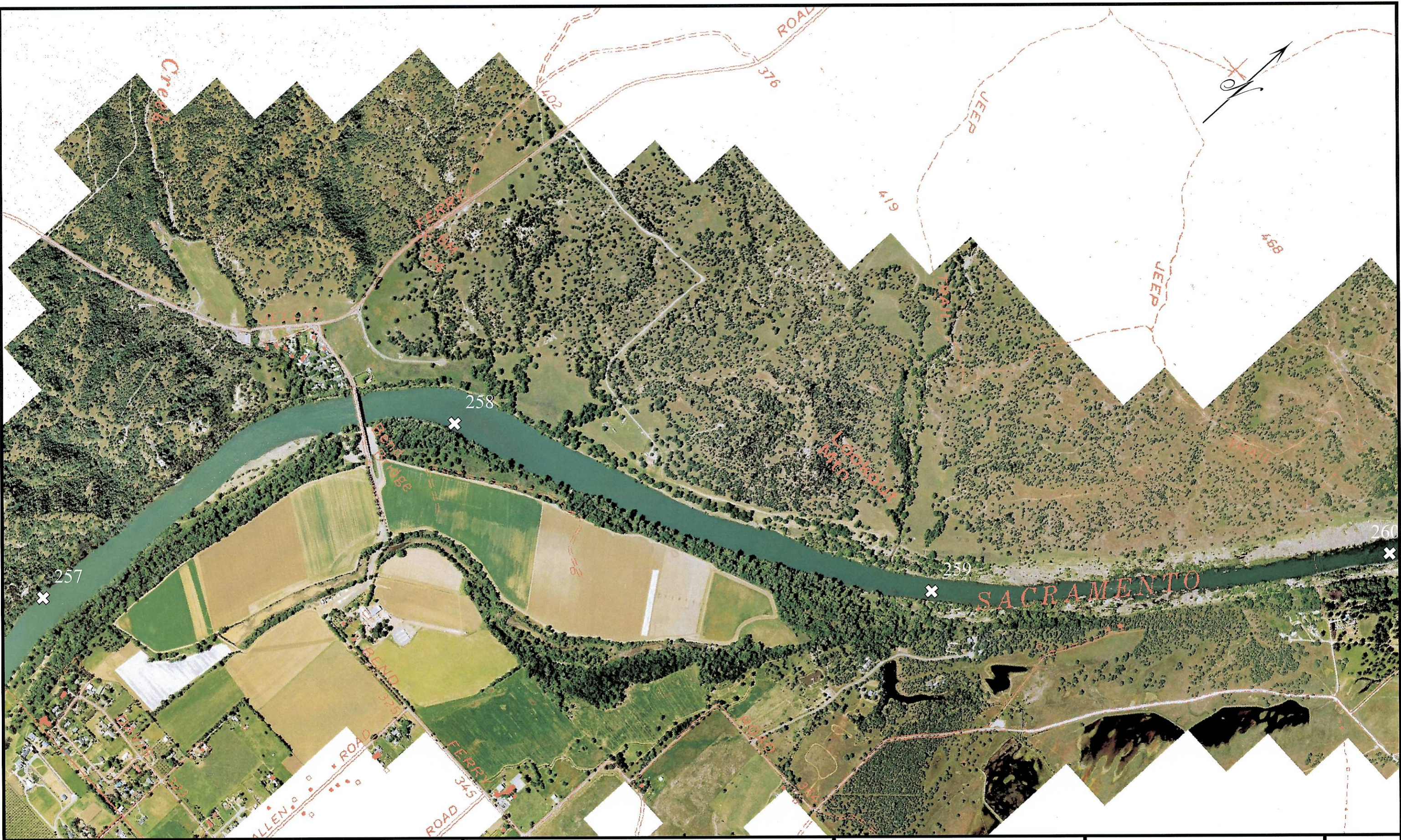
⊕ River miles  
 Digitized from 1991 Aerial Atlas  
 (Source: US Army Corps of Engineers, Sacramento District)

STATE OF CALIFORNIA  
 THE RESOURCES AGENCY  
 DEPARTMENT OF WATER RESOURCES  
 NORTHERN DISTRICT

SACRAMENTO RIVER  
 RED BLUFF (River Mile 243)  
 TO  
 KESWICK DAM (River Mile 302)

Data source: 2004 AirPhoto USA  
 ~2' resolution imagery  
<http://www.airphotousa.com/>





0 500 1,000 2,000 Feet

\* 1 inch = 1,000 feet when printed in 11x17 format

\* Use the scale bar to calculate distances when printed in different formats

⊕ River miles

Digitized from 1991 Aerial Atlas

(Source: US Army Corps of Engineers, Sacramento District)

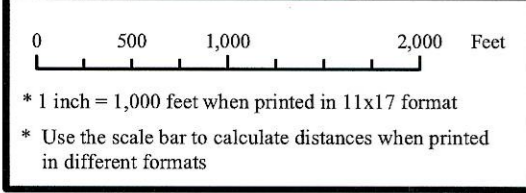
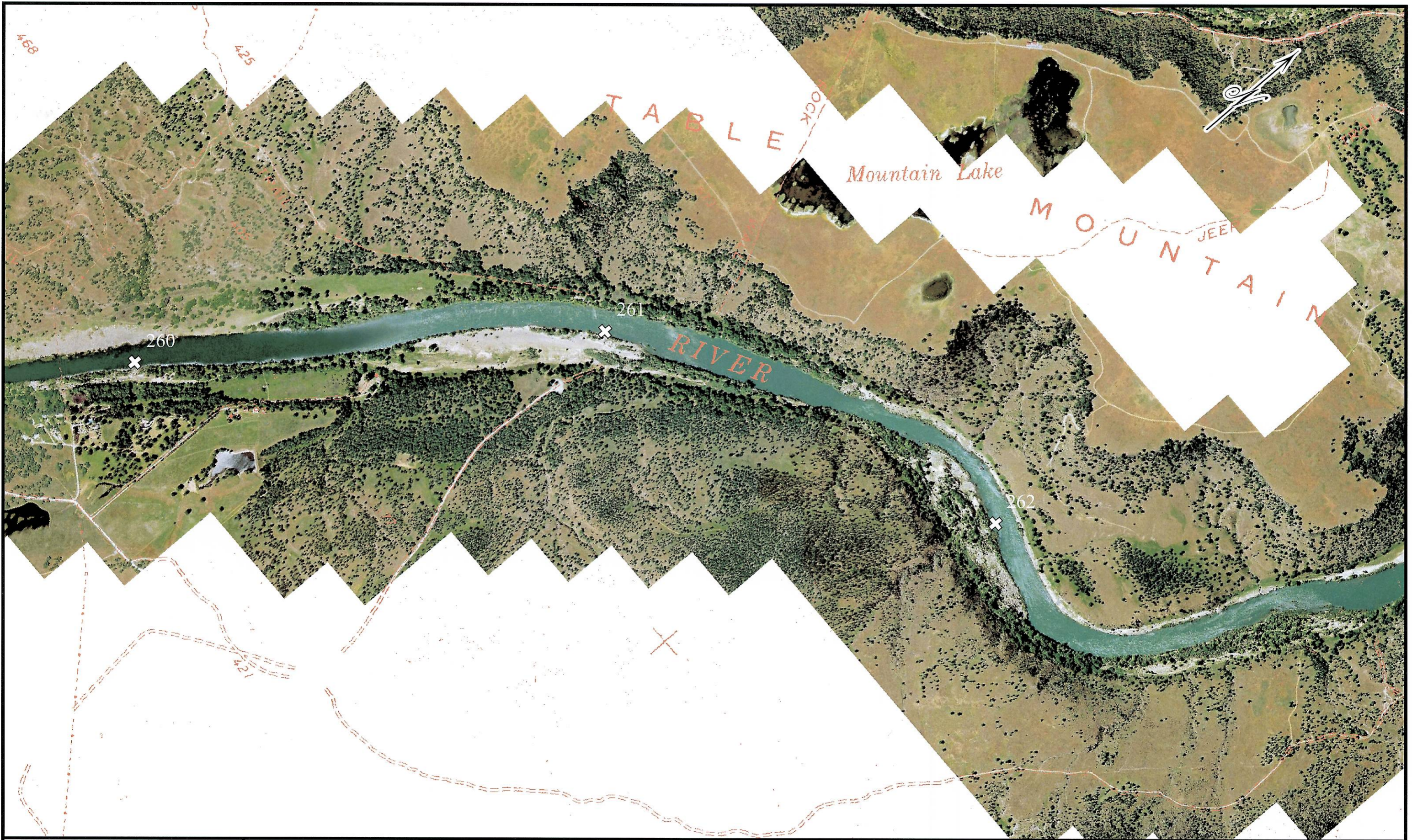
STATE OF CALIFORNIA  
THE RESOURCES AGENCY  
DEPARTMENT OF WATER RESOURCES  
NORTHERN DISTRICT


SACRAMENTO RIVER  
RED BLUFF (River Mile 243)  
TO  
KESWICK DAM (River Mile 302)

Data source: 2004 AirPhoto USA  
~2' resolution imagery

<http://www.airphotousa.com/>





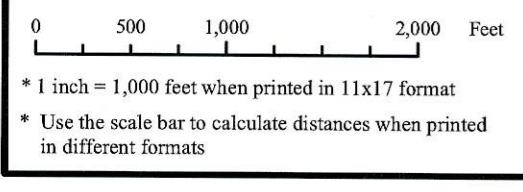
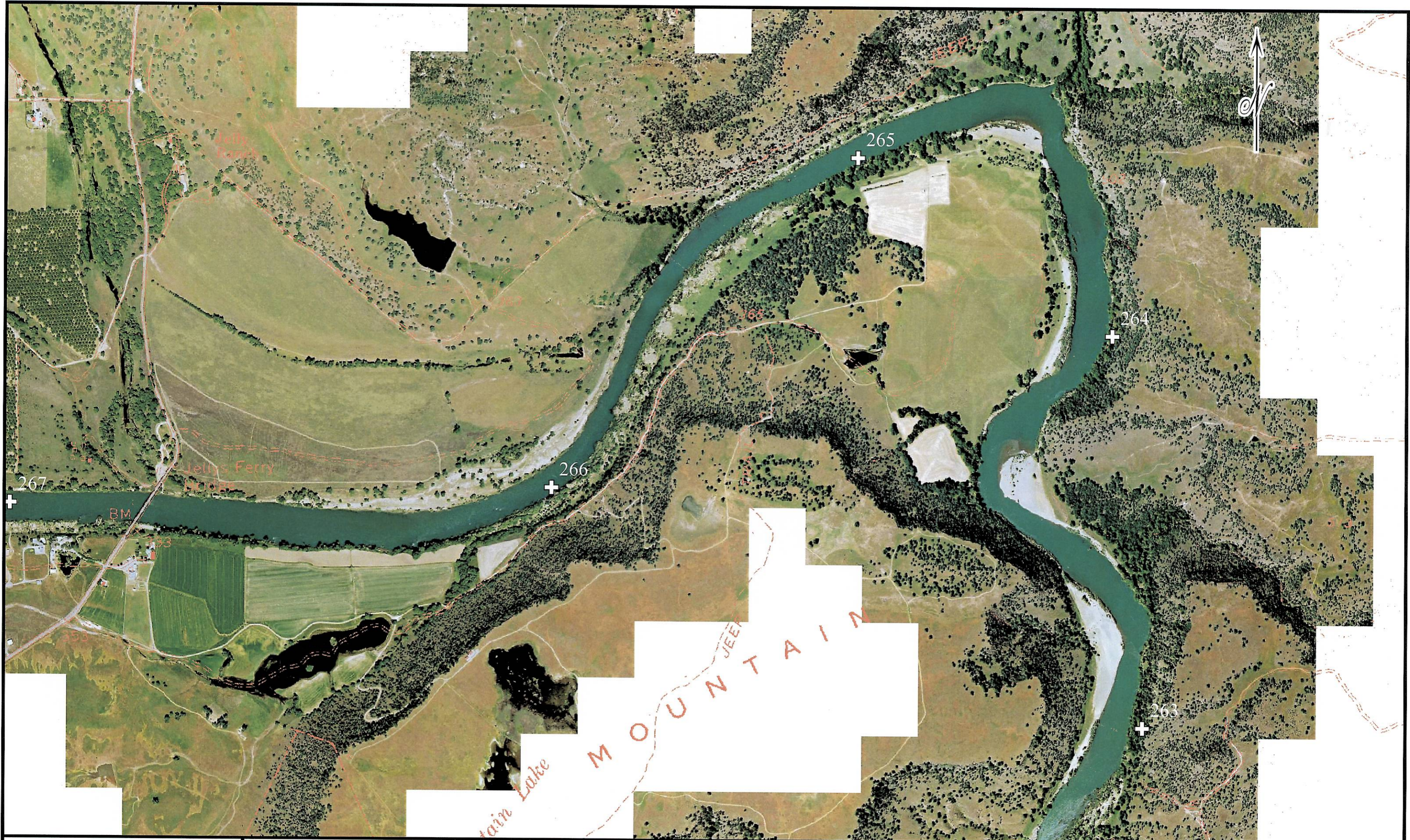
 **River miles**  
 Digitized from 1991 Aerial Atlas  
(Source: US Army Corps of Engineers, Sacramento District)

STATE OF CALIFORNIA  
 THE RESOURCES AGENCY  
**DEPARTMENT OF WATER RESOURCES**  
 NORTHERN DISTRICT

**SACRAMENTO RIVER**  
 RED BLUFF (River Mile 243)  
 TO  
 KESWICK DAM (River Mile 302)

Data source: 2004 AirPhoto USA  
 ~2' resolution imagery  
<http://www.airphotousa.com/>





+ River miles  
 Digitized from 1991 Aerial Atlas  
(Source: US Army Corps of Engineers, Sacramento District)

STATE OF CALIFORNIA  
 THE RESOURCES AGENCY  
 DEPARTMENT OF WATER RESOURCES  
 NORTHERN DISTRICT

SACRAMENTO RIVER  
 RED BLUFF (River Mile 243)  
 TO  
 KESWICK DAM (River Mile 302)

Data source: 2004 AirPhoto USA  
 ~2' resolution imagery  
<http://www.airphotousa.com/>





0 500 1,000 2,000 Feet

\* 1 inch = 1,000 feet when printed in 11x17 format

\* Use the scale bar to calculate distances when printed in different formats

⊕ River miles

Digitized from 1991 Aerial Atlas

(Source: US Army Corps of Engineers, Sacramento District)

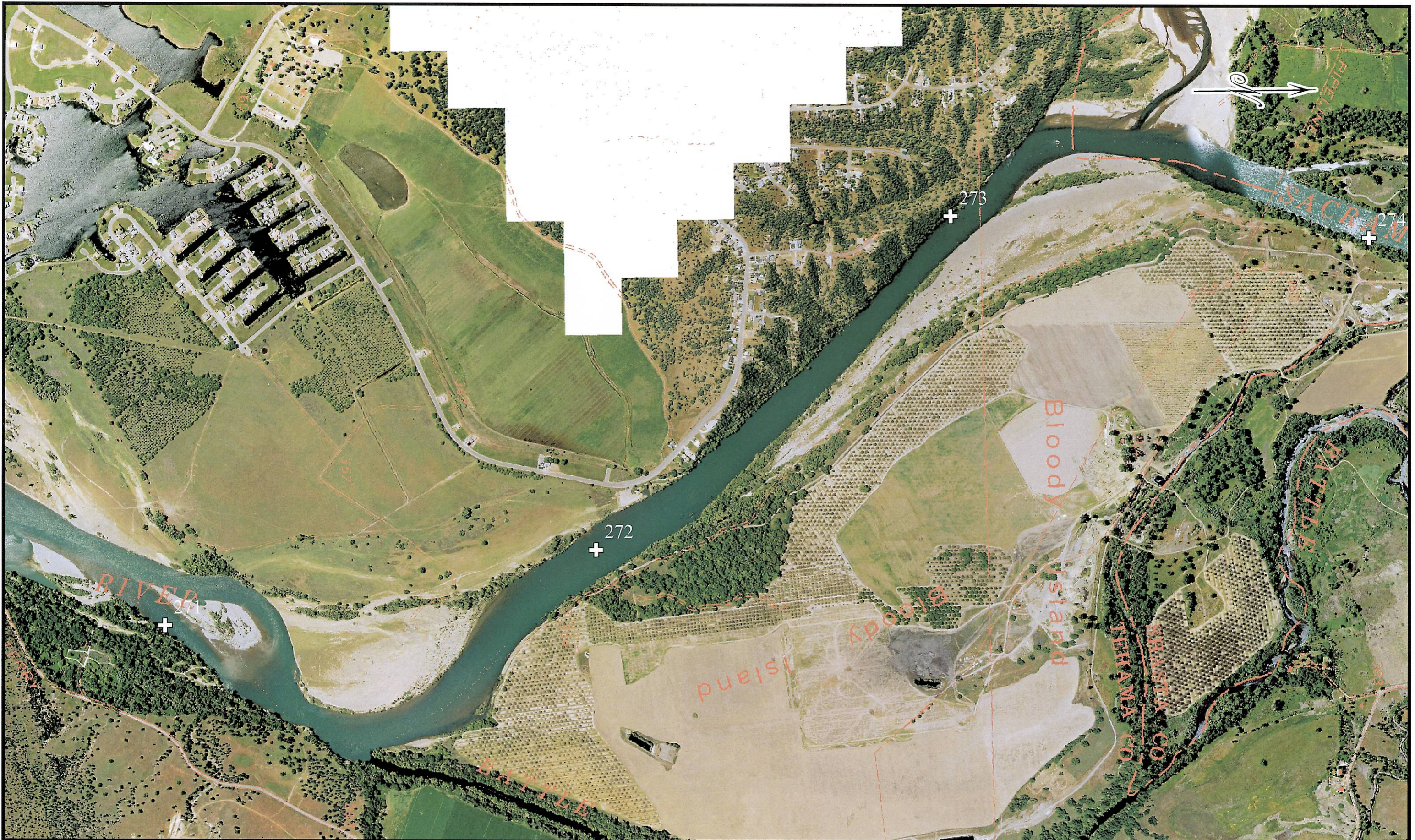
STATE OF CALIFORNIA  
 THE RESOURCES AGENCY  
 DEPARTMENT OF WATER RESOURCES  
 NORTHERN DISTRICT

SACRAMENTO RIVER  
 RED BLUFF (River Mile 243)  
 TO  
 KESWICK DAM (River Mile 302)

Data source: 2004 AirPhoto USA  
 ~2' resolution imagery

<http://www.airphotousa.com/>





0 500 1,000 2,000 Feet

\* 1 inch = 1,000 feet when printed in 11x17 format

\* Use the scale bar to calculate distances when printed in different formats

⊕ River miles

Digitized from 1991 Aerial Atlas

(Source: US Army Corps of Engineers, Sacramento District)

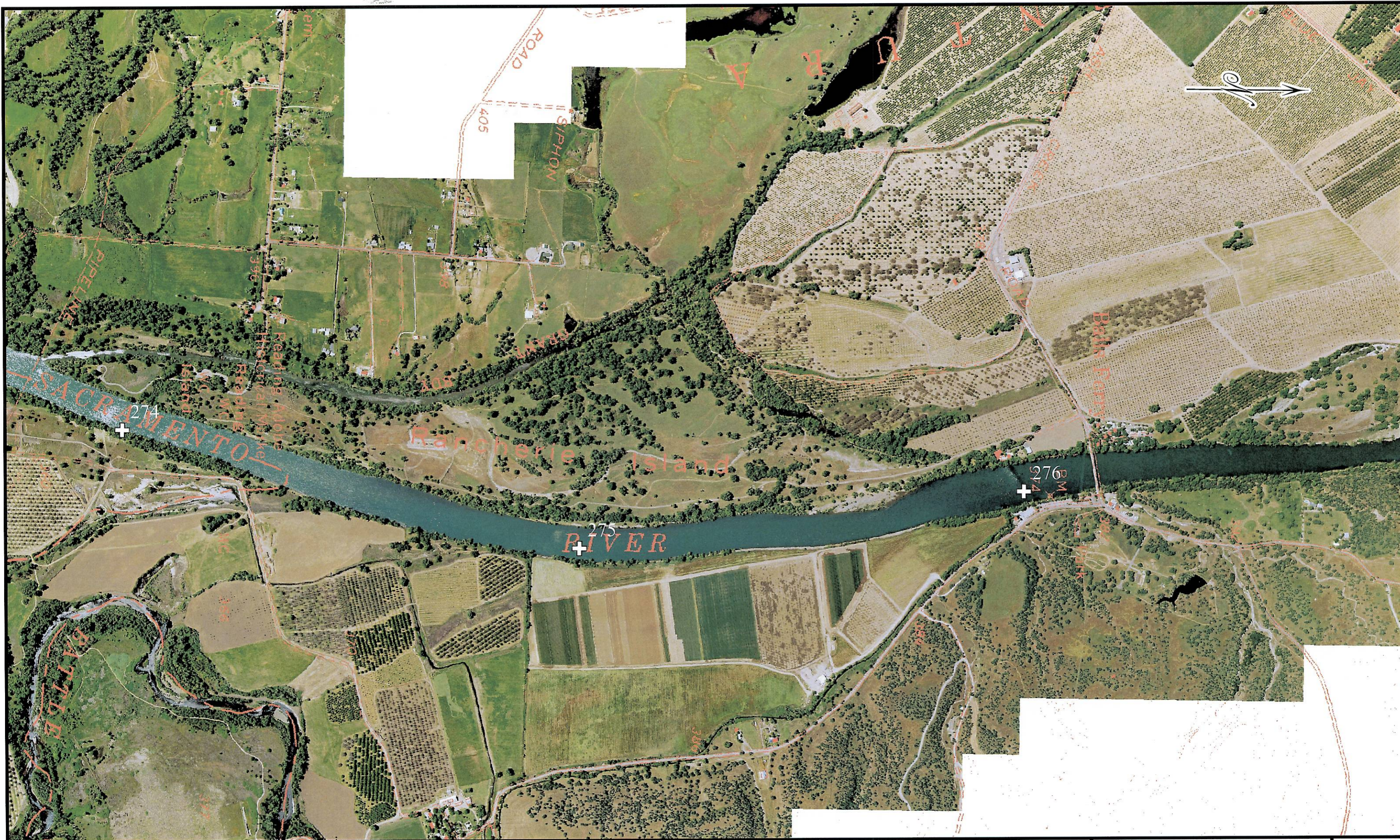
STATE OF CALIFORNIA  
 THE RESOURCES AGENCY  
 DEPARTMENT OF WATER RESOURCES  
 NORTHERN DISTRICT

SACRAMENTO RIVER  
 RED BLUFF (River Mile 243)  
 TO  
 KESWICK DAM (River Mile 302)

Data source: 2004 AirPhoto USA  
 ~2' resolution imagery

<http://www.airphotousa.com/>





0 500 1,000 2,000 Feet  
 \* 1 inch = 1,000 feet when printed in 11x17 format  
 \* Use the scale bar to calculate distances when printed in different formats

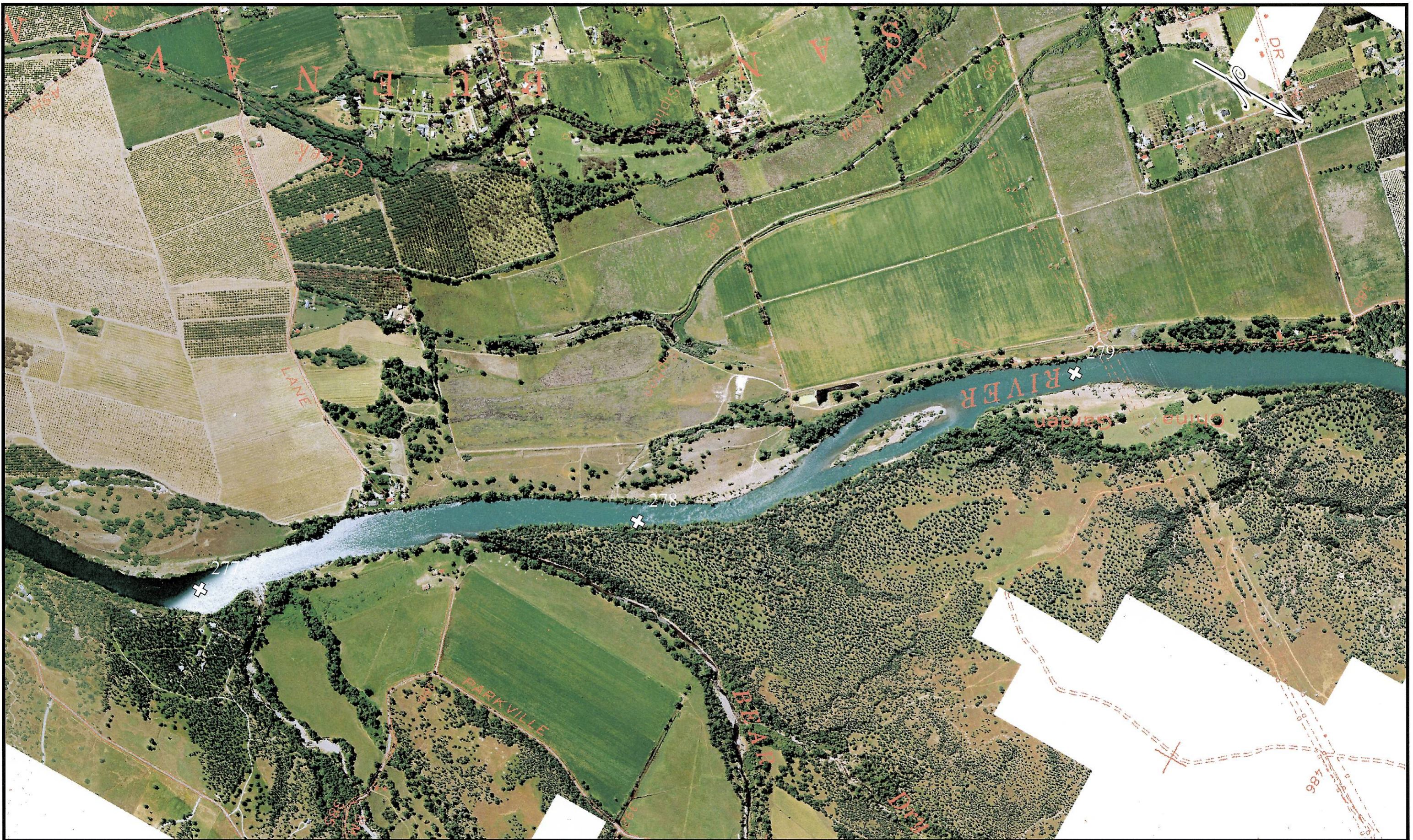
⊕ River miles  
 Digitized from 1991 Aerial Atlas  
 (Source: US Army Corps of Engineers, Sacramento District)

STATE OF CALIFORNIA  
 THE RESOURCES AGENCY  
 DEPARTMENT OF WATER RESOURCES  
 NORTHERN DISTRICT

SACRAMENTO RIVER  
 RED BLUFF (River Mile 243)  
 TO  
 KESWICK DAM (River Mile 302)

Data source: 2004 AirPhoto USA  
 ~2' resolution imagery  
<http://www.airphotousa.com/>





0 500 1,000 2,000 Feet

\* 1 inch = 1,000 feet when printed in 11x17 format  
 \* Use the scale bar to calculate distances when printed in different formats

⊕ River miles

Digitized from 1991 Aerial Atlas  
 (Source: US Army Corps of Engineers, Sacramento District)

STATE OF CALIFORNIA  
 THE RESOURCES AGENCY  
 DEPARTMENT OF WATER RESOURCES  
 NORTHERN DISTRICT

SACRAMENTO RIVER  
 RED BLUFF (River Mile 243)  
 TO  
 KESWICK DAM (River Mile 302)

Data source: 2004 AirPhoto USA  
 ~2' resolution imagery  
<http://www.airphotousa.com/>





0 500 1,000 2,000 Feet  
 \* 1 inch = 1,000 feet when printed in 11x17 format  
 \* Use the scale bar to calculate distances when printed in different formats

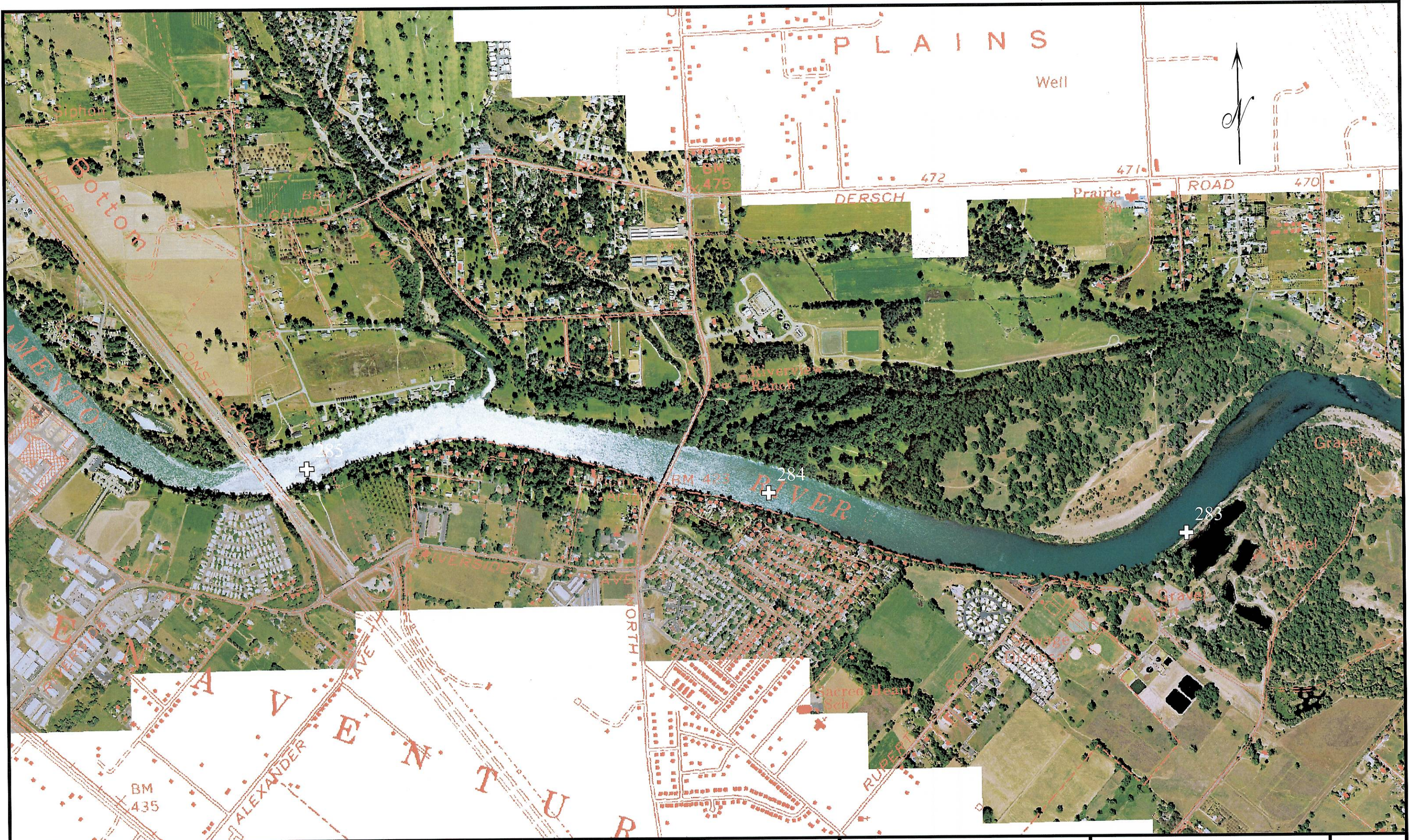
⊕ River miles  
 Digitized from 1991 Aerial Atlas  
 (Source: US Army Corps of Engineers, Sacramento District)

STATE OF CALIFORNIA  
 THE RESOURCES AGENCY  
 DEPARTMENT OF WATER RESOURCES  
 NORTHERN DISTRICT

SACRAMENTO RIVER  
 RED BLUFF (River Mile 243)  
 TO  
 KESWICK DAM (River Mile 302)

Data source: 2004 AirPhoto USA  
 ~2' resolution imagery  
<http://www.airphotousa.com/>





0 500 1,000 2,000 Feet

\* 1 inch = 1,000 feet when printed in 11x17 format

\* Use the scale bar to calculate distances when printed in different formats

**+** River miles

Digitized from 1991 Aerial Atlas

(Source: US Army Corps of Engineers, Sacramento District)

STATE OF CALIFORNIA  
 THE RESOURCES AGENCY  
 DEPARTMENT OF WATER RESOURCES  
 NORTHERN DISTRICT

SACRAMENTO RIVER  
 RED BLUFF (River Mile 243)  
 TO  
 KESWICK DAM (River Mile 302)

Data source: 2004 AirPhoto USA  
 ~2' resolution imagery

<http://www.airphotousa.com/>





0 500 1,000 2,000 Feet

\* 1 inch = 1,000 feet when printed in 11x17 format  
 \* Use the scale bar to calculate distances when printed in different formats

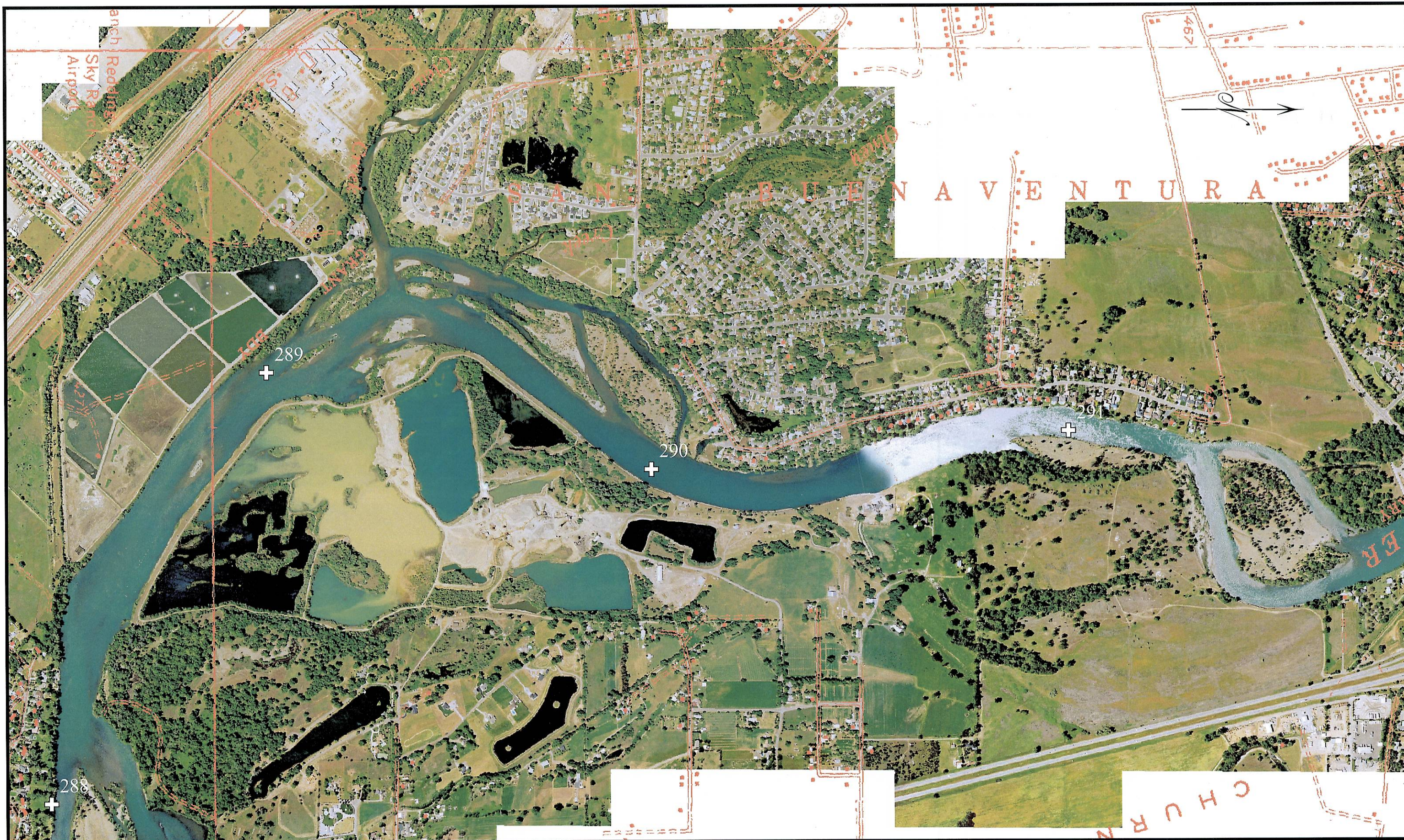
⊕ River miles  
 Digitized from 1991 Aerial Atlas  
 (Source: US Army Corps of Engineers, Sacramento District)

STATE OF CALIFORNIA  
 THE RESOURCES AGENCY  
 DEPARTMENT OF WATER RESOURCES  
 NORTHERN DISTRICT

SACRAMENTO RIVER  
 RED BLUFF (River Mile 243)  
 TO  
 KESWICK DAM (River Mile 302)

Data source: 2004 AirPhoto USA  
 ~2' resolution imagery  
<http://www.airphotousa.com/>





0 500 1,000 2,000 Feet

\* 1 inch = 1,000 feet when printed in 11x17 format

\* Use the scale bar to calculate distances when printed in different formats

⊕ River miles

Digitized from 1991 Aerial Atlas

(Source: US Army Corps of Engineers, Sacramento District)

STATE OF CALIFORNIA  
THE RESOURCES AGENCY  
DEPARTMENT OF WATER RESOURCES  
NORTHERN DISTRICT

SACRAMENTO RIVER  
RED BLUFF (River Mile 243)  
TO  
KESWICK DAM (River Mile 302)

Data source: 2004 AirPhoto USA  
~2' resolution imagery

<http://www.airphotousa.com/>





0 500 1,000 2,000 Feet

\* 1 inch = 1,000 feet when printed in 11x17 format  
 \* Use the scale bar to calculate distances when printed in different formats

⊕ River miles

Digitized from 1991 Aerial Atlas  
 (Source: US Army Corps of Engineers, Sacramento District)

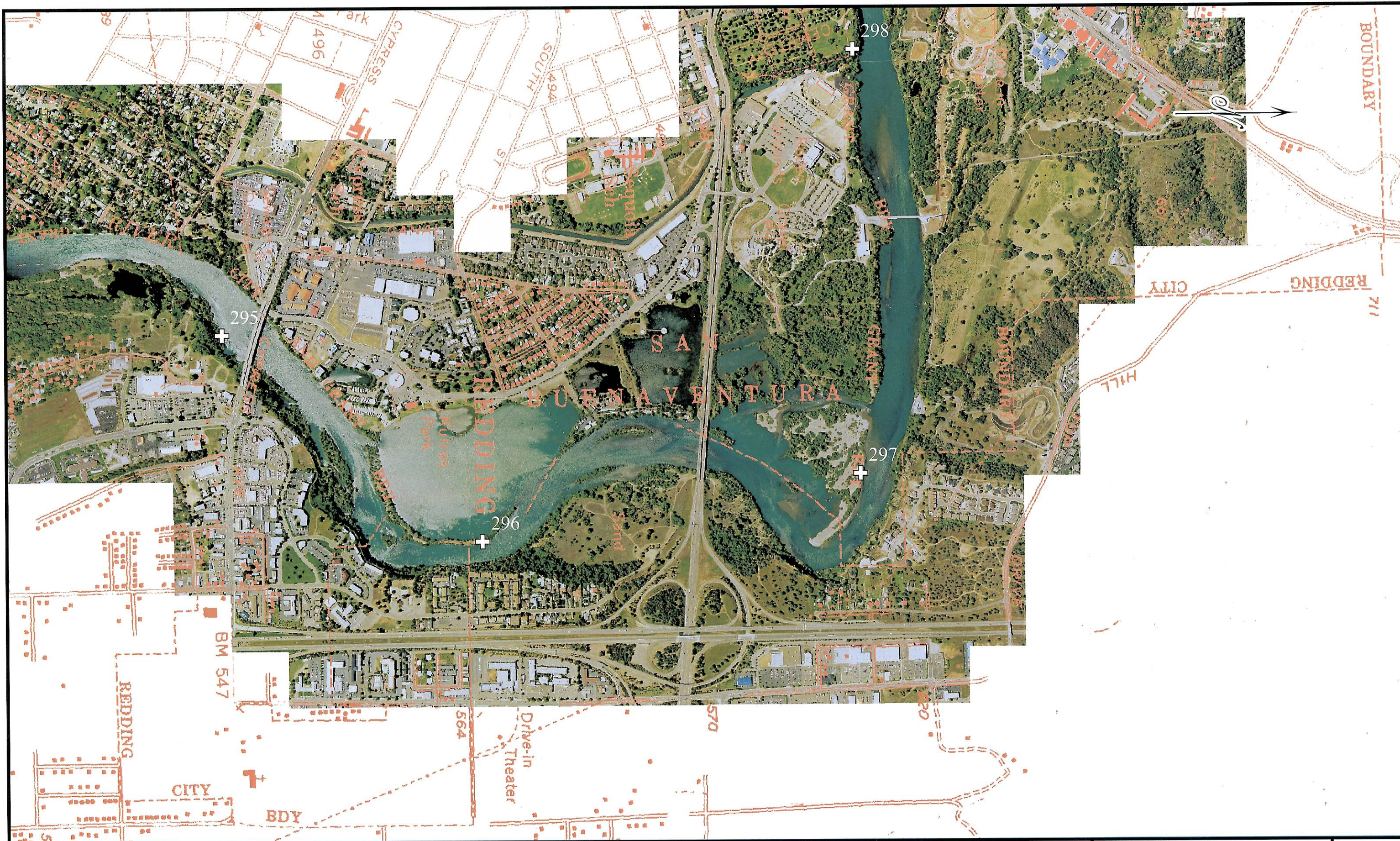
STATE OF CALIFORNIA  
 THE RESOURCES AGENCY  
 DEPARTMENT OF WATER RESOURCES  
 NORTHERN DISTRICT

SACRAMENTO RIVER  
 RED BLUFF (River Mile 243)  
 TO  
 KESWICK DAM (River Mile 302)

Data source: 2004 AirPhoto USA  
 ~2' resolution imagery

<http://www.airphotousa.com/>





0 500 1,000 2,000 Feet  
 \* 1 inch = 1,000 feet when printed in 11x17 format  
 \* Use the scale bar to calculate distances when printed in different formats

⊕ River miles  
 Digitized from 1991 Aerial Atlas  
 (Source: US Army Corps of Engineers, Sacramento District)

STATE OF CALIFORNIA  
 THE RESOURCES AGENCY  
 DEPARTMENT OF WATER RESOURCES  
 NORTHERN DISTRICT

SACRAMENTO RIVER  
 RED BLUFF (River Mile 243)  
 TO  
 KESWICK DAM (River Mile 302)

Data source: 2004 AirPhoto USA  
 ~2' resolution imagery  
<http://www.airphotousa.com/>





0 500 1,000 2,000 Feet  
 \* 1 inch = 1,000 feet when printed in 11x17 format  
 \* Use the scale bar to calculate distances when printed in different formats

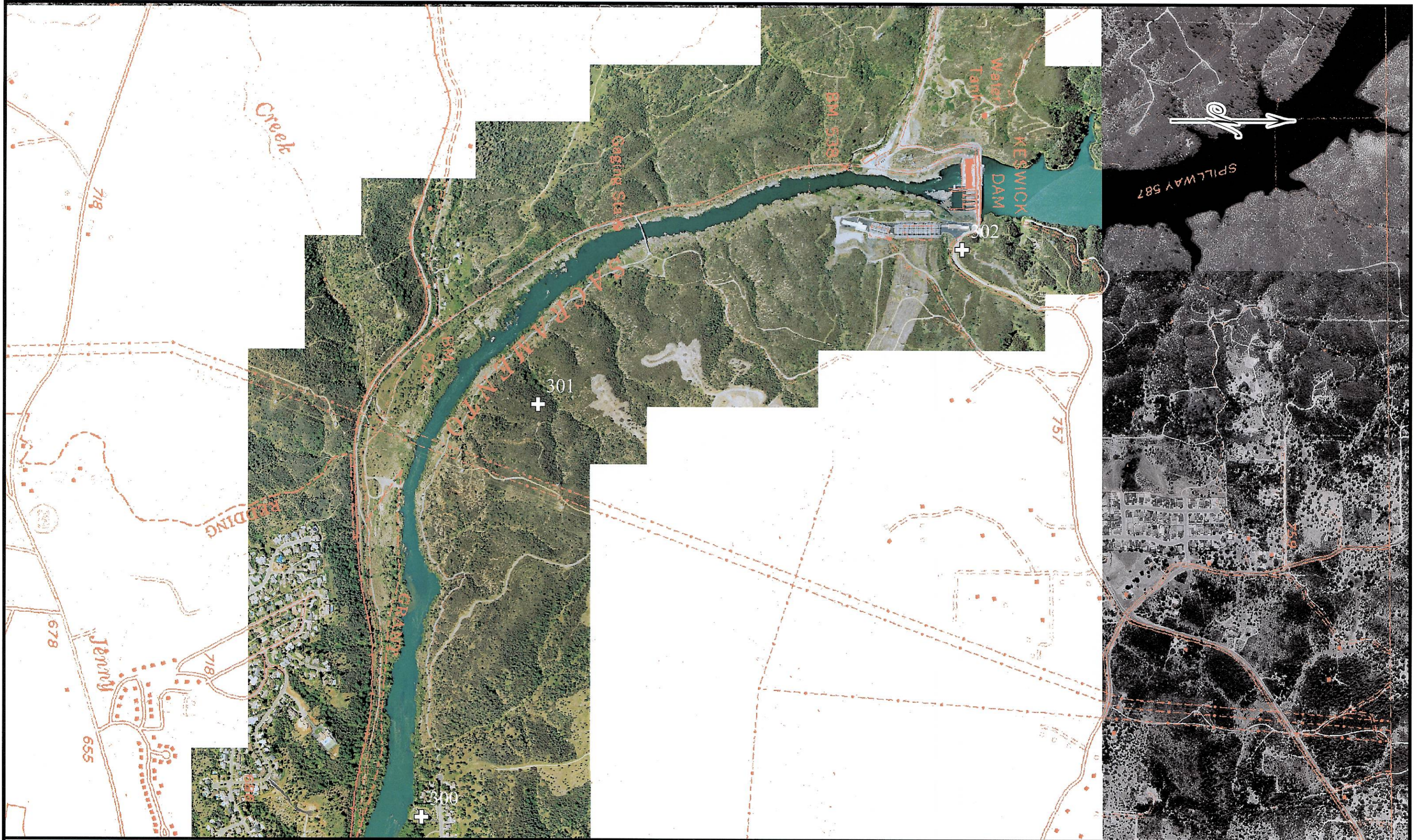
⊕ River miles  
 Digitized from 1991 Aerial Atlas  
 (Source: US Army Corps of Engineers, Sacramento District)

STATE OF CALIFORNIA  
 THE RESOURCES AGENCY  
 DEPARTMENT OF WATER RESOURCES  
 NORTHERN DISTRICT

SACRAMENTO RIVER  
 RED BLUFF (River Mile 243)  
 TO  
 KESWICK DAM (River Mile 302)

Data source: 2004 AirPhoto USA  
 ~2' resolution imagery  
<http://www.airphotousa.com/>





0 500 1,000 2,000 Feet  
 \* 1 inch = 1,000 feet when printed in 11x17 format  
 \* Use the scale bar to calculate distances when printed in different formats

⊕ River miles  
 Digitized from 1991 Aerial Atlas  
 (Source: US Army Corps of Engineers, Sacramento District)

STATE OF CALIFORNIA  
 THE RESOURCES AGENCY  
 DEPARTMENT OF WATER RESOURCES  
 NORTHERN DISTRICT

SACRAMENTO RIVER  
 RED BLUFF (River Mile 243)  
 TO  
 KESWICK DAM (River Mile 302)

Data source: 2004 AirPhoto USA  
 ~2' resolution imagery  
<http://www.airphotousa.com/>